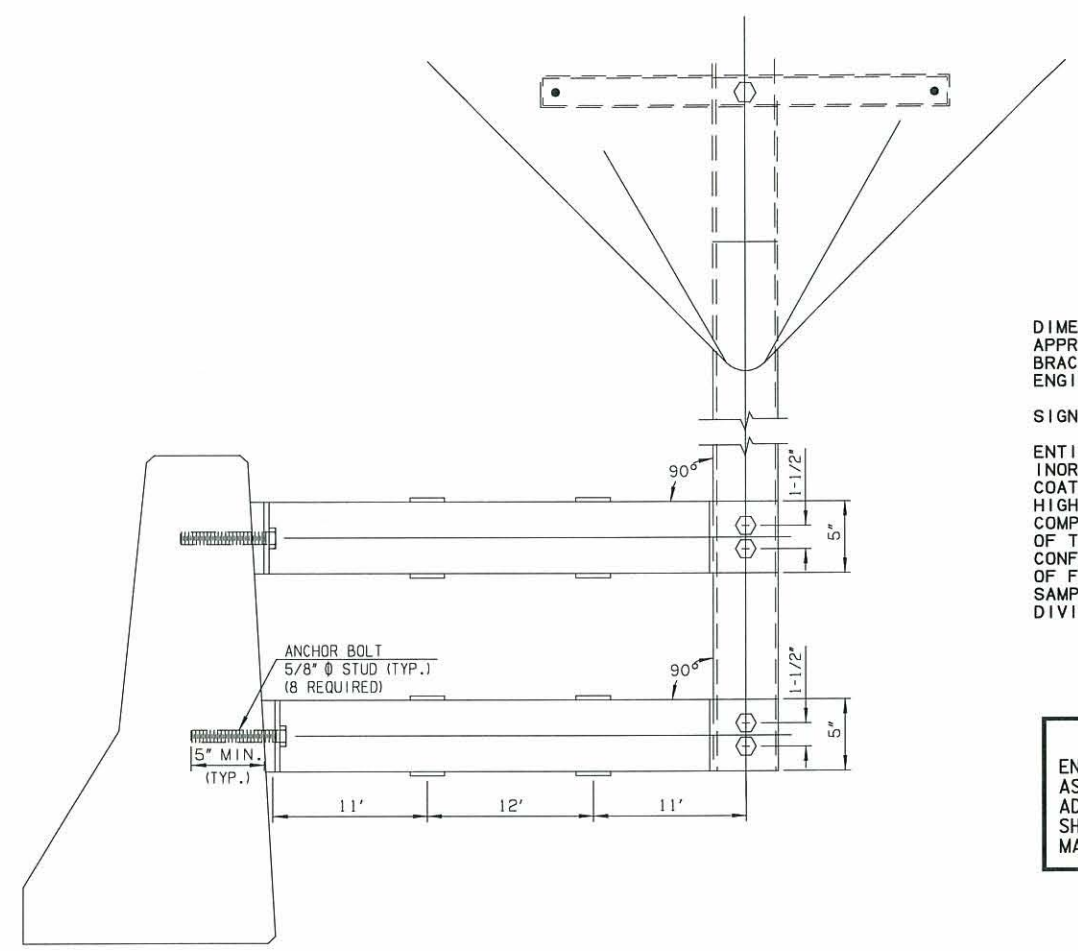
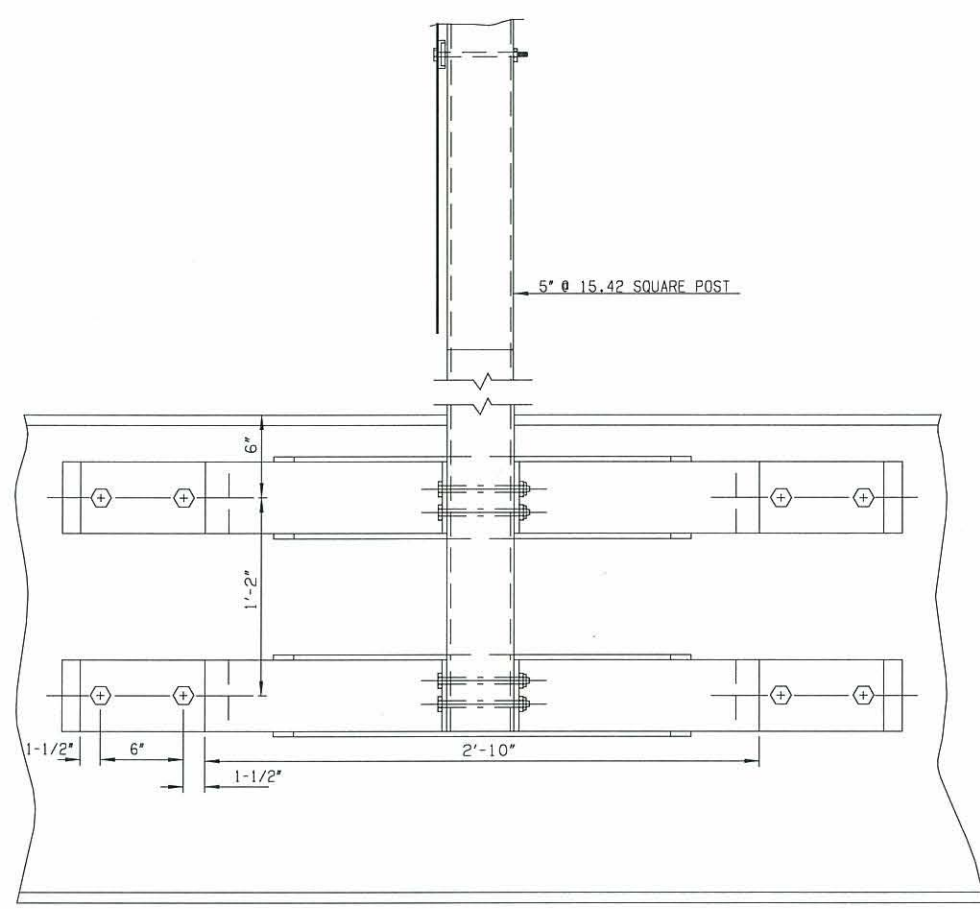


| DESCRIPTION | REVISIONS | DATE |
|-------------|-----------|------|
|             |           |      |

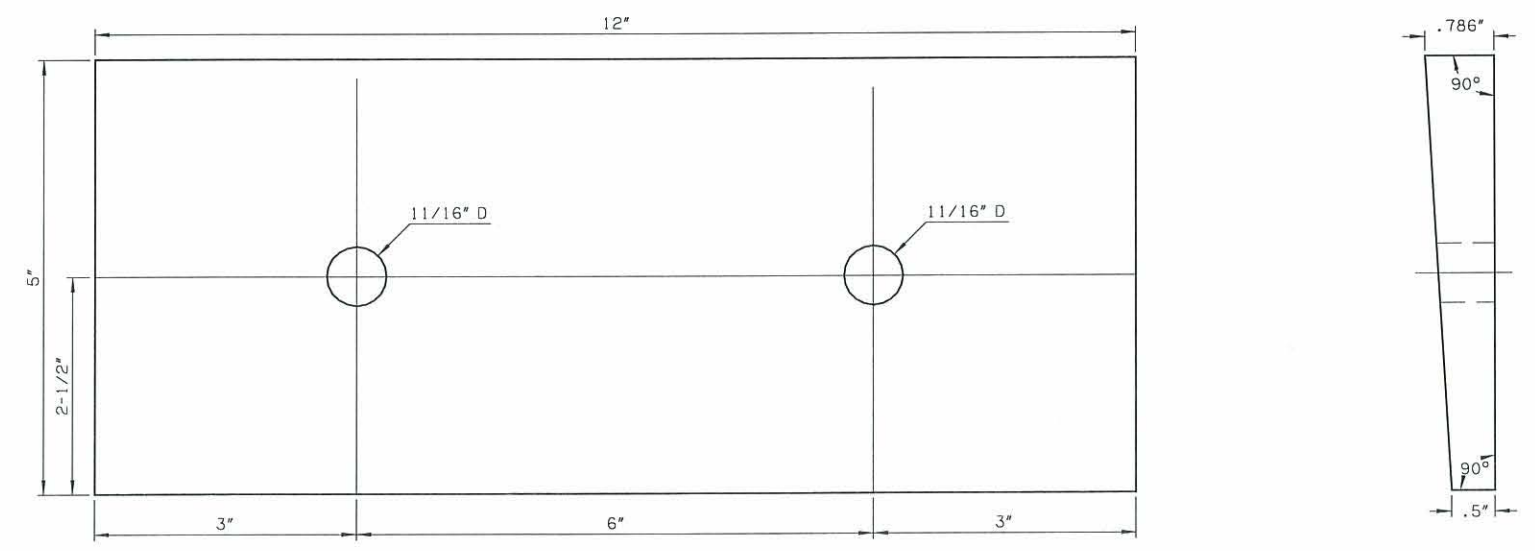
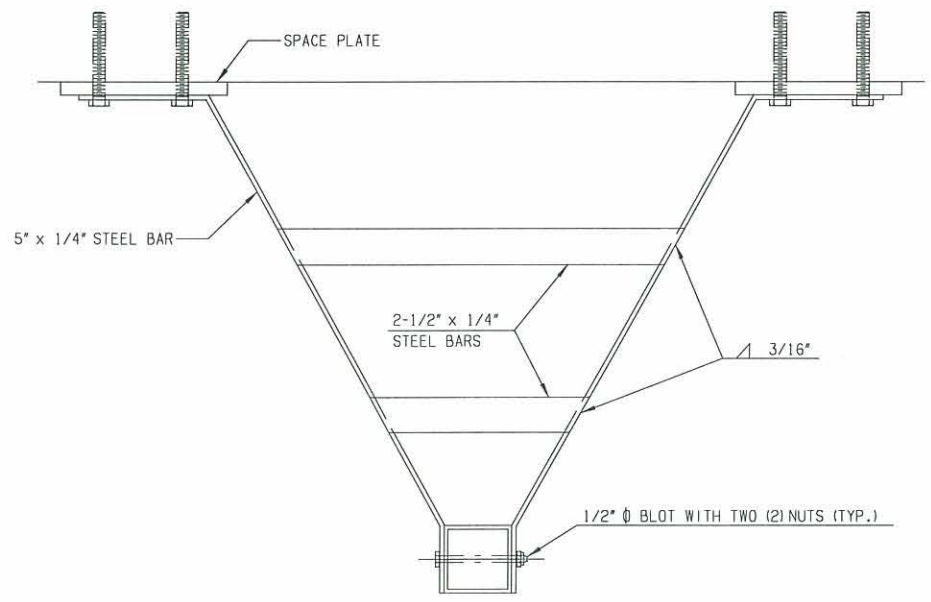


DIMENSIONS SHOWN ON THE DRAWING WILL BE CONSIDERED APPROXIMATE AND NO WORK SHALL BEGIN ON THE SIGN BRACKET UNTIL THE DIMENSIONS ARE VERIFIED BY THE ENGINEER.

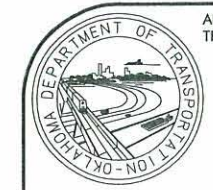
SIGN BRACKET SHALL BE CONSTRUCTED OF A-36 STEEL.

ENTIRE BRACKET SHALL BE PREPARED AND PRIMED WITH AN INORGANIC ZINC PRIMER, THEN PAINT WITH A SUITABLE TIE COAT AND A FINISH COAT OF ALIPHATIC TWO (2) COMPONENT HIGH BUILD POLYURETHANE. ALL MATERIALS SHALL BE COMPATIBLE AND SHALL BE MANUFACTURED BY THE SUPPLIER OF THE INORGANIC ZINC PRIMER. ALL MATERIALS SHALL CONFORM TO O.D.O.T. STANDARD SPECIFICATIONS. COLOR OF FINISH COAT SHALL MATCH COLOR OF BRIDGE, AND COLOR SAMPLE PANEL SHALL BE SUBMITTED TO O.D.O.T. BRIDGE DIVISION FOR APPROVAL BEFORE PAINTING.

**ANCHOR BOLT NOTE**  
ENCAPSULATED NON-EXPANDING CHEMICAL ANCHORS SUCH AS 'MOLLY PARABOND CAPSULE ANCHORS', 'HILTI H&A ADHESIVE CAPSULE', OR APPROVED EQUAL ANCHORAGES SHALL BE INSTALLED IN ACCORDANCE WITH THE MANUFACTURERS SPECIFICATIONS FOR THE SYSTEM USED.



SPACE PLATE DETAILS



APPROVED BY  
TRAFFIC ENGINEER: *Chad Smith* DATE: 8/18/10

TRAFFIC STANDARD  
SIGN BRACKET DETAIL  
(MOUNTING TO BARRIER WALL)